

TRAIL MAP 2017



THE MISSION OF FORT WAYNE TRAILS

is to act as a community partner and advocate in the development of a connected, multi-purpose system of trails with our partners, the City of Fort Wayne and Allen County.

Fort Wayne Trails, Inc.
Auer Center for Arts & Culture
300 East Main Street
Fort Wayne, IN 46802
260 969-0079 • FWTrails.org

facebook.com/FortWayneTrails
@FortWayneTrails or use #FWTrails
@fortwaynetrails or use #FWTrails

DONATE TO TRAILS AT:
FWTrails.org
or call (260) 969-0079

THANK YOU TO OUR COMMUNITY PARTNERS



BECOME A MONTHLY TRAIL BLAZER



Becoming a Monthly Trail Blazer is the best way to show your support to help us go miles!

Your support today helps us continue our vision of a connected community with over 15 miles of trails being planned and developed over the next two years.

As a Trail Blazer, you'll get up-to-date information about trail development, unique outings with our staff, and one-on-one conversations with our executive director.

Make it a point to support trails today with a monthly gift of at least \$10.

fwtrails.org/become-a-trail-blazer

★ EVENT WILL BENEFIT FORT WAYNE TRAILS ★
VISIT BREWEDINTHEFORT.COM FOR MORE INFO!



ACTIVE COMMUTE FRIDAYS

Your car works hard for you. It deserves a break!

Make a commitment to leave the car at home and bike or walk to work on Fridays. If your commute is too long, you can drive halfway, park at a trailhead, and ride the rest of the way to work.



If you work downtown and are interested in riding to work with a group, contact the City Greenways Department to learn more.
427-6228 • greenways@cityoffortwayne.org

Please donate today at **FWTrails.org**

Fort Wayne Trails is a 501c3 non-profit. Donations are tax deductible. We accept debit & credit cards online.

INVESTING IN YOU



260.434.5750

See our real estate portfolio at reecerproperties.com

Fort Wayne • Syracuse • Roanoke • Warsaw

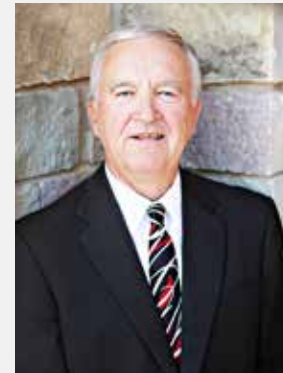
SHARE THE TRAIL.

PARKVIEW TRAUMA CENTERS



WEIGAND CONSTRUCTION

Trust. Well built.™



John Sullivan – Realtor
RE/Max Results
260.466.4755
johnsullivan@realtor.com
www.sullivanhometeam.com



Reusser Design

WEB. MOBILE. STRATEGY.

260.676.2261 | REUSSERDESIGN.COM

FEE-ONLY. NEVER A COMMISSION.



GALECKI FINANCIAL MANAGEMENT
260.436.8525
www.galecki.com

Ft. Wayne's FARMERS MARKET



Every Saturday
9am-1pm

ftwaynesfarmersmarket.com



FORT WAYNE BIKE SHARE

ANNUAL MEMBERSHIP RATES CUT IN HALF!
Memberships are now just \$30/year, or \$25/year if you use promo code **GoBike365**

Visit Bike.Zagster.com/FortWayne to sign up now



The North Eastern Group

Since 1967



North Eastern Group Realty

Serving the land development and real estate needs of NE Indiana.

Visit us at NorthEasternGroup.com



Century 21 Kristi Abel

(260) 312-4558
kristisellsrealstate@outlook.com

Honored to serve Fort Wayne Trails!
Board of Directors
Co-Chair Resource Development Committee
Marketing & Communications Committee

CYCLING AND FITNESS SALES AND SERVICE
PROFESSIONALLY TRAINED AND FRIENDLY STAFF
TOP CYCLING AND FITNESS BRANDS



3801 LIMA RD. FORT WAYNE, IN 46805
WWW.SUMMITCITYBIKES.COM
(260) 484-0182

Wherever you are, Don Hall's isn't far away.



www.donhalls.com



CELEBRATING 10 YEARS OF SERVICE ON FORT WAYNE'S TRAILS & RIVERS

SALES • SERVICE • RENTALS
FWOUTFITTERS.COM • 420.3982



GREATER FORT WAYNE INC.
METRO CHAMBER ALLIANCE

Together, we're growing a more prosperous, vibrant community in Greater Fort Wayne.

www.greaterfortwayneinc.com
(260) 420-6945



WANT TO SEE YOUR BUSINESS IN THE NEXT TRAIL MAP?

DONATE TODAY!

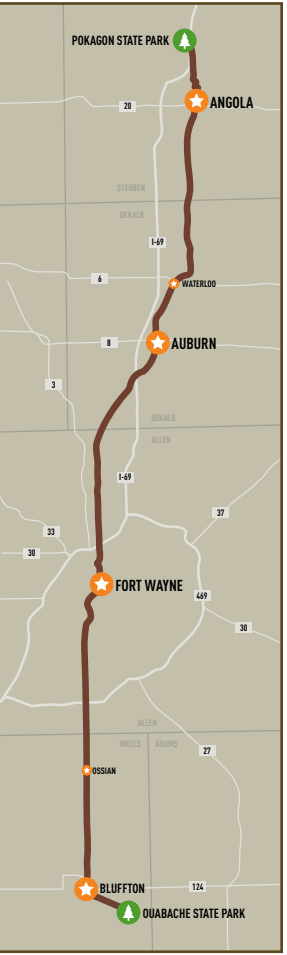
info@FWTrails.org • (260) 969-0079

UNITED TRAILS POKA-BACHE CONNECTOR

The Poka-Bache Connector will connect to the River-greenway trails, then extend south along Bluffton Road. It is a crucial part of the United Trails project for Steuben, DeKalb, Allen, and Wells counties. The trail will eventually run all the way from Ouabache State Park to Pokagon State Park, creating a viable destination for tourists and fueling economic and cultural growth for all four counties.

Ultimately, this trail will solidify the fact that Northeast Indiana is a thriving, culturally rich, active, and healthy community that's a fun place to visit and a great place to live.

The Poka-Bache Connector is highlighted in yellow on the trail map.



CONNECTING COMMUNITIES

RULES OF THE TRAIL

BE SAFE. BE KIND. BE RESPECTFUL.

- ▶ Stay on the trails. Do not enter private property or cross through the yards of homes along the trail.
- ▶ Keep to the right, pass on the left. Ring a bell or call out "on your left" prior to passing.
- ▶ Yield to slower trail users. If you have stopped, please move just off of the trail.
- ▶ Obey traffic signals and signage.
- ▶ Stop for cross traffic.
- ▶ No motorized equipment except official and emergency vehicles and motorized wheelchairs.
- ▶ No horses.
- ▶ If you bring it to the trails, take it when you leave. Never, ever litter.
- ▶ Dog Owners: Please keep your pet on a short leash, pick up and discard waste in a trash receptacle. If a receptacle is not available, please carry it home.
- ▶ Always leave the trail better than you found it. Thank you!



HOW'S THE ACCESSIBILITY?

Most of our trail system has been built following ADA guidelines, or has been upgraded in recent years. A portion of the St. Marys Pathway is not yet accessible for all users. Please contact Fort Wayne Trails if you have questions about particular sections, and we'll help you find the answers.

SPECIAL THANKS

to all of these organizations for sponsoring trails and supporting our 2017 map!

Get more information and find special offers for trail users at

FWTrails.org/maps/businesses

TRAIL SPONSORS

- B** BUSHEY'S WINDOWS, DOORS, & SUNROOMS
- C** CEBOLLA'S MEXICAN GRILL (3 LOCATIONS)
- DH** DON HALL'S RESTAURANTS (5 LOCATIONS)
- R** LUTHERAN HEALTH/REDIMED (5 LOCATIONS)
- Y** YMCA (4 LOCATIONS)

TRAIL-FRIENDLY BUSINESSES

- Water Refill
- Product Deals
- Public Restroom
- Bike Repair
- FW Bike Share

- 3R** THREE RIVERS CO-OP
- AU** AUER CENTER
- CI** CONEY ISLAND
- CW** CAROUSEL ICE CREAM / WEST CENTRAL MICROCREAMERY
- D** DASH-IN
- DG** FORT WAYNE DENTAL GROUP
- eA** EL AZTECA RESTAURANT & TEQUILA BAR
- HF** HEALTH FOOD SHOPPE
- HM** HUMAN MOTOR WORKS
- JK** JK O'DONNELL'S IRISH ALE HOUSE
- M** MAD ANTHONY'S CHILDREN'S HOPE HOUSE
- N** NEW HAVEN BICYCLES
- NH** NEW HAVEN CHAMBER OF COMMERCE
- O** FORT WAYNE OUTFITTERS
- PC** PEDAL CITY
- PP** PENGUIN POINT
- RP** REECER PROPERTIES
- RR** THREE RIVERS RUNNING COMPANY
- SB** SUMMIT CITY BREWERKS
- SC** SUMMIT CITY BICYCLES
- T** TURNSTONE
- TR** TRION TAVERN
- Z** ZESTO

COMMUNITY PARTNERS



TRAIL MAINTENANCE

Downed tree? Damaged trail?

In Fort Wayne city limits, please call the Fort Wayne Greenways and Trails Department at (260) 427-6228

For trails in New Haven, please call New Haven Parks and Recreation at (260) 749-2212

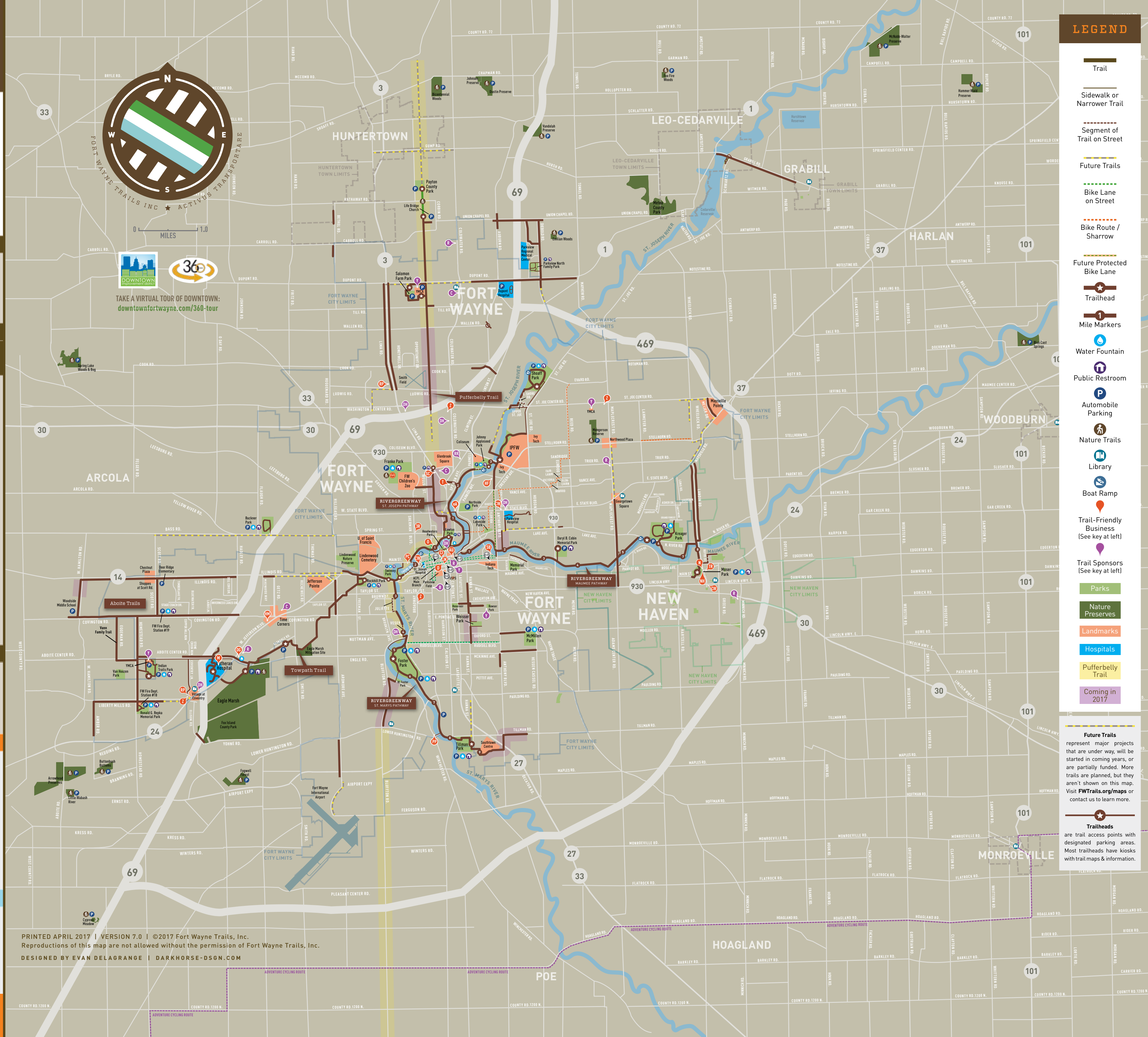
For other areas, please contact the Allen County Highway Department, North Maintenance at (260) 449-4781

If you're not sure, please call us at Fort Wayne Trails and we'll connect you with the right people. (260) 969-0079

GET CONNECTED

- FWTRAILS.ORG
- facebook.com/FortWayneTrails
- [@FortWayneTrails](https://twitter.com/FortWayneTrails) or use #FWTrails
- [@fortwaynetrails](https://twitter.com/fortwaynetrails) or use #FWTrails

★ Please take our trail use survey at FWTrails.org/survey ★



LEGEND

- Trail
- Sidewalk or Narrower Trail
- Segment of Trail on Street
- Future Trails
- Bike Lane on Street
- Bike Route / Sharrow
- Future Protected Bike Lane
- Trailhead
- Mile Markers
- Water Fountain
- Public Restroom
- Automobile Parking
- Nature Trails
- Library
- Boat Ramp
- Trail-Friendly Business (See key at left)
- Trail Sponsors (See key at left)
- Parks
- Nature Preserves
- Landmarks
- Hospitals
- Pufferbelly Trail
- Coming in 2017

Future Trails represent major projects that are under way, will be started in coming years, or are partially funded. More trails are planned, but they aren't shown on this map. Visit FWTrails.org/maps or contact us to learn more.

Trailheads are trail access points with designated parking areas. Most trailheads have kiosks with trail maps & information.